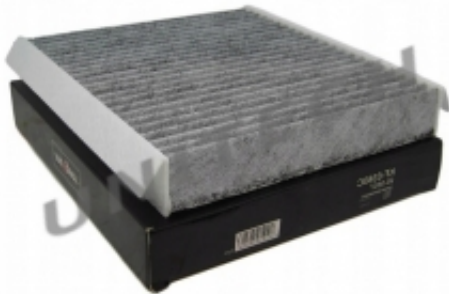


Link do produktu: <https://unitech.com.pl/filtr-kabinowy-citroen-c5-c6-peugeot-407-weglowy-p-3105.html>

FILTR KABINOWY CITROEN C5 C6 PEUGEOT 407 WĘGLOWY



Dostępność	Dostępny
Numer katalogowy	KF-6406C
Producent	MAXGEAR

Opis produktu

FILTR KABINOWY CITROEN C5 C6 PEUGEOT 407 WĘGLOWY

Parametry:

- Długość [mm]: **270**
- Szerokość [mm]: **196**
- Wysokość [mm]: **32**
- Rodzaj filtra: **Filtr z węglem aktywnym**

Filtr jest zamiennikiem:

- FILTRON **K1247A**
- KRAFT **1735970**
- KAMOKA **F508101**
- MEYLE **11-123190011**
- MANN FILTER **CUK2742**
- PEUGEOT **6479.45**

Zastosowanie:

CITROEN

- C5 III (RD_) 1.6 HDi 110 (2008-02 »), mot. 9HZ (DV6TED4), 80kW, 109HP, 1560ccm
- C5 III (RD_) 1.6 HDi 110 (2010-07 »), mot. 9HL (DV6C), 9HR (DV6C), 82kW, 112HP, 1560ccm
- C5 III (RD_) 1.6 HDi 115 (2012-01 »), mot. 9HL (DV6C), 9HR (DV6C), 84kW, 114HP, 1560ccm
- C5 III (RD_) 1.6 THP 150 (2010-07 »), mot. 5FN (EP6CDT), 110kW, 150HP, 1598ccm
- C5 III (RD_) 1.6 THP 155 (2009-04 »), mot. 5FV (EP6CDT), 115kW, 156HP, 1598ccm
- C5 III (RD_) 1.6 VTi 120 (2010-07 »), mot. 5FS (EP6C), 88kW, 120HP, 1598ccm
- C5 III (RD_) 1.8 16V (2008-02 »), mot. 6FY (EW7A), 92kW, 125HP, 1749ccm

- C5 III (RD_) 2.0 16V (2008-02 »), mot. RFJ (EW10A), 103kW, 140HP, 1997ccm
- C5 III (RD_) 2.0 16V BioFlex (2008-02 »), mot. RFJ (EW10A), 103kW, 140HP, 1997ccm
- C5 III (RD_) 2.0 HDi (2008-02 »), mot. RHF (DW10BTED4), RHR (DW10BTED4), 100kW, 136HP, 1997ccm
- C5 III (RD_) 2.0 HDi 140 (2009-04 »), mot. RHF (DW10BTED4), 103kW, 140HP, 1997ccm
- C5 III (RD_) 2.0 HDi 150 / BlueHdi 150 (2009-04 »), mot. AHR (DW10FD), RHE (DW10CTED4), 110kW, 150HP, 1997ccm
- C5 III (RD_) 2.0 HDi 165 (2009-04 »), mot. RHH (DW10CTED4), 120kW, 163HP, 1997ccm
- C5 III (RD_) 2.0 HDi 180 (2015-03 »), mot. AHW (DW10FC), 133kW, 181HP, 1997ccm
- C5 III (RD_) 2.2 HDi (2008-02 »), mot. 4HT (DW12BTED4), 125kW, 170HP, 2179ccm
- C5 III (RD_) 2.2 HDi 200 (2010-07 »), mot. 4HL (DW12C), 150kW, 204HP, 2179ccm
- C5 III (RD_) 2.7 HDi (2008-02 »), mot. DT17ED4, 150kW, 204HP, 2720ccm
- C5 III (RD_) 3.0 HDi 240 (2009-04 »), mot. DT20C, 177kW, 241HP, 2992ccm
- C5 III (RD_) 3.0 V6 (2008-02 »), mot. XFU (ES9A), XFV (ES9A), 155kW, 211HP, 2946ccm
- C5 III Break (TD_) 1.6 HDi 110 (2008-02 »), mot. 9HZ (DV6TED4), 80kW, 109HP, 1560ccm
- C5 III Break (TD_) 1.6 HDi 110 (2010-07 »), mot. 9HL (DV6C), 9HR (DV6C), 82kW, 112HP, 1560ccm
- C5 III Break (TD_) 1.6 HDi 115 (2012-01 »), mot. 9HL (DV6C), 9HR (DV6C), 84kW, 114HP, 1560ccm
- C5 III Break (TD_) 1.6 THP 150 (2009-04 »), mot. 5FN (EP6CDT), 110kW, 150HP, 1598ccm
- C5 III Break (TD_) 1.6 THP 155 (2009-04 »), mot. 5FV (EP6CDT), 115kW, 156HP, 1598ccm
- C5 III Break (TD_) 1.6 VTI 120 (2010-07 »), mot. 5FS (EP6C), 88kW, 120HP, 1598ccm
- C5 III Break (TD_) 1.8 16V (2008-02 »), mot. 6FY (EW7A), 92kW, 125HP, 1749ccm
- C5 III Break (TD_) 2.0 16V (2008-02 »), mot. RFJ (EW10A), 103kW, 140HP, 1997ccm
- C5 III Break (TD_) 2.0 16V BioFlex (2008-02 »), mot. RFJ (EW10A), 103kW, 140HP, 1997ccm
- C5 III Break (TD_) 2.0 HDi (2008-02 »), mot. RHR (DW10BTED4), 100kW, 136HP, 1997ccm
- C5 III Break (TD_) 2.0 HDi 140 (2009-04 »), mot. RHF (DW10BTED4), 103kW, 140HP, 1997ccm
- C5 III Break (TD_) 2.0 HDi 150 / BlueHdi 150 (2009-04 »), mot. AHR (DW10FD), RHE (DW10CTED4), 110kW, 150HP, 1997ccm
- C5 III Break (TD_) 2.0 HDi 165 (2009-04 »), mot. RHH (DW10CTED4), 120kW, 163HP, 1997ccm
- C5 III Break (TD_) 2.0 HDi 180 (2015-03 »), mot. AHW (DW10FC), 133kW, 181HP, 1997ccm
- C5 III Break (TD_) 2.2 HDi (2008-02 »), mot. 4HT (DW12BTED4), 125kW, 170HP, 2179ccm
- C5 III Break (TD_) 2.2 HDi 165 (2008-02 »), mot. 4HP (DW12BTED4), 120kW, 163HP, 2179ccm
- C5 III Break (TD_) 2.2 HDi 200 (2010-07 »), mot. 4HL (DW12C), 150kW, 204HP, 2179ccm
- C5 III Break (TD_) 2.7 HDi (2008-02 »), mot. DT17ED4, UHZ (DT17BTED4), 150kW, 204HP, 2720ccm
- C5 III Break (TD_) 3.0 HDi 240 (2009-04 »), mot. DT20C, 177kW, 241HP, 2992ccm
- C5 III Break (TD_) 3.0 V6 (2008-02 »), mot. XFU (ES9A), XFV (ES9A), 155kW, 211HP, 2946ccm
- C6 (TD_) 2.2 HDi (2006-06 »), mot. 4HP (DW12BTED4), 120kW, 163HP, 2179ccm
- C6 (TD_) 2.2 HDi (2006-06 »), mot. 4HT (DW12BTED4), 125kW, 170HP, 2179ccm
- C6 (TD_) 2.7 HDi (2005-09 »), mot. DT17ED4, UHZ (DT17BTED4), 150kW, 204HP, 2720ccm
- C6 (TD_) 3.0 HDi (2009-04 »), mot. DT20C, 177kW, 241HP, 2992ccm
- C6 (TD_) 3.0 V6 (2005-09 »), mot. XFV (ES9A), XFX (ES9J4S), 155kW, 211HP, 2946ccm

PEUGEOT

- 407 (6D_) 1.6 HDi 110 (2004-05 »), mot. 9HZ (DV6TED4), 80kW, 109HP, 1560ccm
- 407 (6D_) 1.8 16V (2005-09 »), mot. 6FY (EW7A), 92kW, 125HP, 1749ccm
- 407 (6D_) 2.0 (2004-05 »), mot. RFN (EW10J4), 100kW, 136HP, 1997ccm
- 407 (6D_) 2.0 16V (2005-09 »), mot. RFJ (EW10A), 103kW, 140HP, 1997ccm
- 407 (6D_) 2.0 Bioflex (2007-09 »), mot. RFJ (EW10A), 103kW, 140HP, 1997ccm
- 407 (6D_) 2.0 Flex (2005-10 » 2011-02), mot. RFJ (EW10A), 103kW, 140HP, 1997ccm
- 407 (6D_) 2.0 HDi (2009-06 » 2010-12), mot. RHF (DW10BTED4), 103kW, 140HP, 1997ccm
- 407 (6D_) 2.0 HDi (2009-07 »), mot. RHH (DW10CTED4), 120kW, 163HP, 1997ccm
- 407 (6D_) 2.0 HDi 135 (2004-05 »), mot. RHR (DW10BTED4), 100kW, 136HP, 1997ccm
- 407 (6D_) 2.2 (2004-05 »), mot. 3FZ (EW12J4), 116kW, 158HP, 2230ccm
- 407 (6D_) 2.2 16V (2005-09 »), mot. 3FY (EW12J4), 120kW, 163HP, 2230ccm
- 407 (6D_) 2.2 HDi (2008-06 »), mot. 4HP (DW12BTED4), 120kW, 163HP, 2179ccm
- 407 (6D_) 2.2 HDi 170 (2006-05 »), mot. 4HT (DW12BTED4), 125kW, 170HP, 2179ccm
- 407 (6D_) 2.7 HDi (2005-10 »), mot. UHZ (DT17), 150kW, 204HP, 2720ccm
- 407 (6D_) 3.0 (2004-05 »), mot. XFV (ES9A), 155kW, 211HP, 2946ccm
- 407 coupe (6C_) 2.0 HDi (2005-10 »), mot. RHR (DW10BTED4), 100kW, 136HP, 1997ccm
- 407 coupe (6C_) 2.0 HDi (2008-09 » 2009-12), mot. RHR (DW10BTED4), 103kW, 140HP, 1997ccm
- 407 coupe (6C_) 2.0 HDi (2009-06 »), mot. RHH (DW10CTED4), 120kW, 163HP, 1997ccm
- 407 coupe (6C_) 2.2 16V (2005-10 »), mot. 3FY (EW12J4), 120kW, 163HP, 2230ccm
- 407 coupe (6C_) 2.7 HDi (2005-10 »), mot. UHZ (DT17), 150kW, 204HP, 2720ccm
- 407 coupe (6C_) 3.0 HDi (2009-06 »), mot. DT20C, 177kW, 241HP, 2992ccm
- 407 coupe (6C_) 3.0 V6 (2005-10 »), mot. XFV (ES9A), 155kW, 211HP, 2946ccm
- 407 SW (6E_) 1.6 HDi 110 (2004-05 »), mot. 9HZ (DV6TED4), 80kW, 109HP, 1560ccm
- 407 SW (6E_) 1.8 16V (2005-09 »), mot. 6FY (EW7A), 92kW, 125HP, 1749ccm
- 407 SW (6E_) 2.0 (2004-05 »), mot. RFN (EW10J4), 100kW, 136HP, 1997ccm
- 407 SW (6E_) 2.0 16V (2005-09 »), mot. RFJ (EW10A), 103kW, 140HP, 1997ccm
- 407 SW (6E_) 2.0 Bioflex (2008-01 »), mot. RFJ (EW10A), 103kW, 140HP, 1997ccm
- 407 SW (6E_) 2.0 HDi (2008-08 »), mot. RHR (DW10BTED4), 103kW, 140HP, 1997ccm

-
- 407 SW (6E_) 2.0 HDi (2009-07 »), mot. RHH (DW10CTED4), 120kW, 163HP, 1997ccm
 - 407 SW (6E_) 2.0 HDi 135 (2004-07 » 2010-12), mot. RHR (DW10BTED4), 100kW, 136HP, 1997ccm
 - 407 SW (6E_) 2.2 (2004-05 »), mot. 3FZ (EW12J4), 116kW, 158HP, 2230ccm
 - 407 SW (6E_) 2.2 16V (2005-09 »), mot. 3FY (EW12J4), 120kW, 163HP, 2230ccm
 - 407 SW (6E_) 2.2 HDi (2008-06 »), mot. 4HP (DW12BTED4), 120kW, 163HP, 2179ccm
 - 407 SW (6E_) 2.2 HDi 170 (2006-05 »), mot. 4HT (DW12BTED4), 125kW, 170HP, 2179ccm
 - 407 SW (6E_) 2.7 HDi (2005-10 »), mot. UHZ (DT17), 150kW, 204HP, 2720ccm
 - 407 SW (6E_) 3.0 (2004-05 »), mot. Xfv (ES9A), 155kW, 211HP, 2946ccm